

PRATT

AGLOW

2024 FINE ART AUCTION



Auction Catalog



READY, SET,

GLOW!

A vibrant illustration of Mario running towards the viewer. He is wearing his signature red cap with a white 'M' on a red circle, a red long-sleeved shirt, blue overalls with yellow buttons, and brown shoes. He has a joyful expression with a wide smile. In his left hand, he holds a glowing blue Piranha Plant. The Piranha Plant has a white face with large black eyes and a green stem with two leaves. It is surrounded by several bright, four-pointed white stars. The background is a bright, sunny landscape with rolling green hills, a blue sky with fluffy white clouds, and a checkered path leading into the distance. In the top left corner, there is a red rectangular box with the Nintendo logo.

Nintendo

NINTENDO IS PROUD TO SUPPORT
The Pratt Art Auction
for Pratt Fine Arts Center

A WELCOME FROM EXECUTIVE DIRECTOR JESSICA BORUSKY

Pratt is Aglow Tonight!

This year, we celebrate our community through highlighting the lifecycle of an artist at Pratt Fine Arts Center: from how our youth and teen program nurtures talent and experiential learning to artistic collaboration that lasts a lifetime. From offering time, space, and resources for artists to develop and grow their practices into sustainable careers, to the vital importance of teaching alongside maintaining a studio practice. Our community represents people and organizations from across the region, is infused with genuine connection through learning with, and from, one another, and aglow with the creative spark that resides in all of us.



Nourishing that spark requires time, space, reflection, connection, and curiosity. Pratt invites all of us to explore, grow, and find our expressive voice through artmaking. It is a safe space to be vulnerable, courageous, expansive, focused, learning, and knowledgeable. This ethos extends beyond the classroom: we support our students, artists, teachers, staff, board, and community to challenge themselves as individuals and to collectively uplift art access for all.

Tonight, we invite you to relish the people and personalities behind the artwork, to extend your imagination toward process, and to champion the brave creativity of producing the objects and stories we all value. As we wrap up our strategic planning process, which will offer Pratt and its community a blueprint for the next three years, we recognize your support as a foundational pillar toward achieving our mission: supporting artists and individuals in the Puget Sound region through equipped studios and artistic education; supporting teaching artist and staff pay; and underwriting support for our incredible programs — all of which inform the artwork you see and experience tonight.

Pratt is Aglow due to an exceptional community of creative thinkers, makers, and advocates.

Thank you for helping us transform and advance the creative spark into a sustainable and lifelong joy for artistic practice, development, and community.

Jessica Borusky *Executive Director*

AUCTION COMMITTEE WELCOME

Dear Pratt Community,

Welcome to Pratt Aglow! We're honored to be here with you this evening to celebrate Pratt, its mission, artists, and our thriving art community.

For those in the room supporting us for the first time, we'd like to share Pratt's mission: To foster a creative, inclusive art-making community, providing access to quality education and professionally equipped studios for everyone. Pratt promotes the joy and transformative power of art and actively supports the development of visual artists. The mission dovetails nicely into our event vision this year: *The Lifecycle of the Artist*.

For co-chair **Lynn Everett Read**, the career path of an artist typically involves gaining experience, finding mentors, and seizing opportunities. For Lynn, Pratt has been instrumental in each of these areas. As a student, he acquired knowledge, learned new processes, and met several mentors who have significantly impacted his life, work, and community. He is proud to be a recipient of the Jon and Mary Shirley Scholarship in Glass and appreciates the fact that Pratt is accessible to all.

For co-chair **Tiffany Moss**, Pratt's focus on arts education provides the impetus for everyone to find their inner artist. In *The Creative Act: A Way of Being* by Rick Rubin he shares:

"Regardless of whether or not we're formally making art, we are all living as artists. To live as an artist is a way of being in the world. You exist as a creative being in a creative universe."

For Pratt Board President **Dian Hartono**, Pratt fosters a vibrant, inclusive community where individuals can engage in creative expression across various mediums. Pratt's commitment to its mission ensures that the arts are available to everyone, making it a cherished resource within the Seattle community for both aspiring and established artists.

Our wish is that everyone in this room realizes creativity resides in all of us and after this evening, you feel inspired to register for a class at Pratt starting your own artist lifecycle!

We appreciate you joining us as we light up the night and support Pratt! Your participation in this event means engaging in an evening of inspiration and contributes to our efforts to make art universally accessible.

Tiffany Moss *Auction Committee Co-Chair*
Lynn Read *Auction Committee Co-Chair*
Dian Hartono *Board President*

Ready, set, glow!
#PrattAglow2024



Table of Contents

- Pratt Aglow Award Winners 2
- 2024 Jury Members 4
- Bidder’s Guide 6
- Golden Ticket Drawing & Goblet Grab 9
- About Pratt Fine Arts Center 10
- Thank You to Our Sponsors & Supporters 12
- Silent Auction One Item Listings 15
- Silent Auction Two Item Listings 27
- Live Auction Item Listings 45
- Raise the Paddle 61
- Artist & Experience Index 74

INTRODUCTION

Schedule of Events

5:30 PM

Registration, Cocktails, and Silent Auctions

6:50 PM

Silent Auction One Closes

7:10 PM

Silent Auction Two Closes

7:30 PM

Dinner and Live Auction

10:00 PM

End of Auction



ARTIST AWARD WINNERS

Juror's Excellence Award

Selected individually by each of our jurors, three prizes are awarded for overall artistic excellence.



Preston Singletary
Box Drum Design
Live Auction #32



Trenton Quioco
Bakunawa
Live Auction #8



Jeanne Marie Ferraro
Iron Man and His Friends
Live Auction #23

Conceptual Visionary Award

One prize, determined by the jury as a group, awarded to an artist whose work demonstrates conceptual appeal beyond traditional aesthetic valuation.



**Brandon Bowman, Makana Cole,
Finnegan Fant, and John O'Neil**
Graft
Live Auction #16

Skill Artistry Award

One prize, determined by the jury as a group, awarded to an artist whose work demonstrates superior craftsmanship and mastery of materials.



Crista Matteson
Spring Hare
Live Auction #13

Directors' Choice

Three prizes, selected exclusively from the silent auction by Pratt's leadership team, awarded to highlight works of exceptional quality.



Alton Bucheimer
Burst
Silent Auction #2029



Pratt + Seattle
Metals Guild
Collaboration 2024
Silent Auction #2055



Eriko Kobayashi
Alex's Pizza
Silent Auction #1031

Pratt Fine Arts Center thanks Blick Art Materials for their generous support of our artist awards.

BLICK
art materials

2024 JURY MEMBERS



José Carlos Diaz

Deputy Director at Seattle Art Museum, Former Chief Curator at The Andy Warhol Museum

José Carlos Diaz's extensive experience in curatorial roles at prestigious institutions such as the Seattle Art Museum and The Andy Warhol Museum speaks to his expertise in the art world. His contributions to exhibitions and artist commissions have left a lasting impact. José's background in cultural history and curatorial endeavors enriches our jury's insights.

@jjjcccdiaz



Elisheba Johnson

Curator, Poet, Public Artist, and Consultant

Elisheba Johnson, a prominent figure in Seattle's art scene, brings a wealth of experience as a curator, poet, public artist, and consultant. Her commitment to fostering creativity and advancing racial equity in public art has earned her recognition and accolades in the field. Elisheba's extensive background in the arts, combined with her dedication to community building, makes her a valuable member of our jury.

@elishebajohnson



Walt Riehl

Vice Chair, Museum of Glass Board of Trustees

Walt Riehl has been a cornerstone of the Seattle art community, actively supporting and even helping to construct spaces essential for local artists to thrive. He is Vice Chair on the Board of Trustees at the Museum of Glass in Tacoma. A long-standing supporter of Pratt and a familiar face in the community, Walt has enriched his connection to the art world through numerous classes and as an avid glass enthusiast and collector.

AUCTIONEER



Ian Lindsay

Ian Lindsay is a fundraising host, actor, and writer. He has been honored to help many nonprofit organizations around the Pacific Northwest and beyond. Seattle University’s Philosophy and Drama programs led to many years of stage acting throughout Seattle, followed by on-camera work in Los Angeles. Ian now writes and produces for television and podcasts. He recently co-produced a podcast with Morgan Freeman’s Revelation Entertainment—*Hello, John Doe* is available wherever you find podcasts. Ian is a co-parent with his spouse of two young artists—which is a lot of fun... and hard... like art.

2024 AUCTION SPONSOR GIFT



Lynn Read / Vitreluxe

Many thanks to Lynn Read and Vitreluxe, creators of Pratt’s 2024 Auction Sponsor Gifts. An award-winning artist, designer, craftsman, and educator, Lynn established Vitreluxe in 1999, with a minimalist approach and an appreciation for modern design and functionality. Inspired by the traditional battuto engraving technique, each beautiful press-molded *Shimmer Bowl* was handmade by a team of artisans in Portland, Oregon.

Photo: Shimmer Bowls by Vitreluxe Glass Studios

BIDDER'S GUIDE

Bidder Numbers

All guests must check in at the registration desk. At registration, you will receive a miniature bid card/entrée ticket, which includes your bid number, meal choice, and table number. Hold on to your miniature bid card/entrée ticket and be sure to place it in front of you at your table for the wait staff to see.

Also at registration, you will be asked to sign up for Express Pay and confirm/provide your contact information (email address, cell phone number, and mailing address) for billing and receipts.

A large bid card with your name and bid number on it will be placed on your dining table for use in the Live Auction. All sales are recorded by bid number. If you and your guest requested separate bidder numbers, you will each receive a bid card associated with your name.

Silent Auctions

To bid on items in the Silent Auction, write your bid number opposite the dollar amount on the bid sheet. You must use pre-printed bid amounts. You may skip lines if you wish.

To guarantee your purchase of a Silent Auction item, enter your bid number in the **BUY IT NOW** box. The person whose number appears in the **BUY IT NOW** box will immediately own the item.

At the close of each Silent Auction, a Pratt representative will circle the highest written bid for each item. In the event of a dispute, at the discretion of the auctioneer, final oral bids will be taken from those who have already placed written bids.

Live Auction

The Live Auction will start shortly after dinner service begins at 7:30pm and will continue until all items have been auctioned.

To make a bid, hold up your bid card. The highest bid number acknowledged by the auctioneer will be the purchaser. A Live Auction bid acknowledged by the auctioneer is a legal contract to purchase the item. In the event of a dispute between bidders, the piece may be withdrawn and new bidding initiated at the discretion of the auctioneer.

We are delighted to welcome **Ian Lindsay** to Pratt as auctioneer for this evening's festivities. Ian is an auctioneer, actor, and acting teacher. He has been honored to assist a wide range of non-profit organizations from around the Puget Sound and beyond. A former member of the Seattle Arts Commission and Shunpike, Ian works to promote the fiscal health of the arts in the Puget Sound region and beyond.



Raise the Paddle

During the Live Auction, auctioneer Ian Lindsay will invite guests to **Raise the Paddle** in support of Pratt Fine Arts Center’s mission. Once Ian Lindsay announces the level at which you would like to participate, hold your bid card high until he reads off your bidder number.

Express Pay

Enroll in Express Pay when you check in. By registering for Express Pay, you can avoid standing in line to pay for your purchases at the end of the night. To participate in Express Pay, a designated registration assistant will swipe your credit card or hold a signed check made out by you to Pratt Fine Arts Center. These will be kept on file for the event. At the close of the evening, your purchases will be paid as you have requested. If you do not make a purchase during the event, your credit card information will be deleted or your check will be shredded. A Guest Statement receipt for all charges will be emailed to you post-event.

Check Out

Pratt Fine Arts Center accepts Visa, MasterCard, American Express, Discover, cash, and personal checks as payment for auction purchases.

Express Pay participants receive priority assistance; Pratt representatives provide Express Pay participants with Express Pay Guest Statements as they enter the checkout area. Review your statement to ensure all your items are included, then proceed directly to the art pick-up area to claim your purchases without stopping at the cashiers' station.

Those not using Express Pay should stop at the cashiers' station after 9:00pm to receive a Guest Statement based on their bidder number and pay for their purchases. You must show this Guest Statement as proof of payment to the assistants at the art pick-up area to claim your purchases.

Items become the property and responsibility of the purchaser upon receipt. All sales are final the night of the auction. The buyer is responsible for removing all artwork and other purchases from the auction premises at the close of the event. In the case of an oversized item, Pratt representatives will work with you to make special arrangements in the art pick-up area.

Sales Tax, Deductibility, and Service Fees

No sales tax will be charged for purchases made during this event. Pratt Fine Arts Center is a registered 501(c)3 charitable organization. If your purchase price for an item exceeds the fair market value stated in the catalog, the overage may be deductible as a charitable contribution. Please consult with your financial and tax advisor for details.

Art and experience purchases will be subject to a standard 10% processing fee which will be added to your purchases upon checkout. These fees allow us to provide you with quality auctioneer services, accurate data entry staff, and professional cashiers. Processing fees do not apply to Raise the Paddle contributions.

General Information

Pratt Fine Arts Center reserves the right to add or withdraw items to or from the auction without notice. Every attempt has been made to describe and catalog all items accurately, but all items are offered "as is, where is." The values listed are estimates of fair market value only. Items have not been appraised.

Each person attending the auction assumes all risks and hazards related to the auction and items obtained at the auction. Each attendee agrees to hold harmless from any liability arising there from Pratt Fine Arts Center, its elected and appointed officials, members, employees, the auctioneer, the auction company and its agents and employees, the event organizers, sponsors, and volunteers connected to the auction.



GOLDEN TICKET DRAWING

Participate to Win Your Choice of a Live Auction Item*

- Purchase a Golden Ticket for \$100 for a chance to select your choice from the designated Live Auction items
- Use your bid number to purchase as many Golden Tickets as you like while supplies last during the Silent Auction. Look for the Golden Ticket sellers in the Silent Auction sections
- With each purchase, you'll receive a flashy ring!
- The winning Golden Ticket will be drawn before the start of the Live Auction. At that time, the winner will select from the designated Live Auction items.

** Exclusions are noted on Live Auction items not eligible for Golden Ticket selection.
Must be present to win. Good Luck!*

GOBLET GRAB

Pratt presents a special collection of handblown goblets for sale this evening for **\$200 each**. Each piece was created by a talented Pratt artist. Be sure to make your selection early. There are a limited number available, and you don't want to miss out!

Our Featured Goblet Artists:

- | | |
|---------------------|-------------------|
| • Matt Abadi | • Alton Bucheimer |
| • Granite Calimpong | • Jason Christian |
| • Jason McDonald | • Sean O'Neill |
| • Lynn Read | • Zeke Spier |

Sponsored by Nancy & Roger MacPherson for your enjoyment.



ABOUT PRATT FINE ARTS CENTER

Your Artist is Inside.

Pratt Fine Arts Center began in 1976 as a tiny art facility with a big vision to build a community of artists and an educational center providing the tools and training to support the creation of art. Today, Pratt makes art accessible to everyone, offering a place for spirited exchange, self-expression, and personal transformation through creativity. A unique multidisciplinary visual arts resource, Pratt provides education and instruction, community programs, and professionally equipped artmaking facilities.



Pratt Fine Arts Center is proud to serve as a lasting tribute to Edwin T. Pratt, who devoted his life to improving quality of life for all people. Mr. Pratt served as Executive Director of the Seattle Urban League from 1961 to 1969. His assassination in that year by unknown assailants was deeply felt by many Seattleites who depended on Pratt's calm leadership during a period of social upheaval.

For more than four decades, Pratt Fine Arts Center has been providing the Northwest community with the opportunity to experience art. Pratt's classes reach nearly 4,000 students and our studios serve more than 300 working artists each year. Our classes, lectures, exhibits, and programs reach more than 20,000 people annually. Affordable studio space with an unparalleled array of equipment provides artists of all ages and abilities with the opportunity to learn, experiment, and create.

Land Acknowledgment

Pratt Fine Arts Center acknowledges that we are on the traditional land of the Coast Salish People, including the Duwamish People, past, present and future. We honor with gratitude the land itself and the Duwamish Tribe.

Pratt Fine Arts Center Staff

Jessica Borusky
Executive Director

Fumi Amano
Glass Studio Manager

Brandon Bowman
*Metal Sculpture Studio
Access Coordinator*

Dion Buchanan
Office Manager

Rand Coburn
Closer/Charger

Ken Coleman
*Jewelry/Metals Access
Coordinator*

Sam Companatico
Administrative Assistant

Julie Custer
Grant & Sponsorship Manager

Sarah Daniel
Associate Director of Finance

Jo Anne Hume
Director of Development

Kamla Kakaria
*2D Studio Manager & Programs
Project Advisor*

Cheryl Matson
*Flameworking Access
Coordinator*

Kim McIntyre
Wood Technician

Jennie Moore
Administrative Assistant

Mina Mora
Administrative Assistant

Reed Peck-Kriss
*Metal Sculpture Studio
Manager*

Morgan Peterson
*Hot & Cold Shop Access
Coordinator*

Anne Randall
Jewelry/Metals Assistant

Bianca Recuenco
Digital Marketing Manager

Patrick Rich
Glass Studio Technician

Miles Schlagel
*Jewelry/Metals & Stone Studio
Manager*

Dara Solliday
Administrative Manager

Matt Spinney
*Hot Glass Casting Access
Coordinator & Closer/Charger*

KCJ Szwedzinski
Fusing Access Coordinator

Mike Thurlow
Wood Studio Manager

Natalia Torres
*Director of Education &
Programs*

Elizabeth Weber
*Woodturning Access
Coordinator*

Cait Willis
*Administrative Assistant &
Facilities Coordinator*

Rickie Wolfe
*Print Studio Access Coordinator
& 2D Assistant*

Rya Wu
Development Manager

Bailey Zahniser
*Youth & Teen Program
Manager*

Auction Committee

Tiffany Moss
Co-Chair

Lynn Read
Co-Chair

Cheryl Berenson
Archer Gallegos
Bonnie Grosby
Will Passmore
Samantha Song
Emily Thomsen

Board of Trustees

Dian Hartono
President

Francisco Guerrero
Vice President

Julie Hamm
Vice President

Sarah Shaikh
Treasurer

Samantha Song
Secretary

Cheryl Berenson
Lee Campbell
Keith Cooke
Becky Gelder
Cynthia Hibbard
Susan Marabito
Jo Mikesell
Mollie Price
Evelyn Sanford-Nicholson
Matthew Schaub
Bernice Terrell

Strategic Planning Committee

Jessica Borusky
Lee Campbell
Jeanne Marie Ferraro
Dian Hartono
Jo Anne Hume
Kamla Kakaria
Kim McIntyre
Evelyn Sanford-Nicholson
Fletch Waller
Bailey Zahniser

WITH HEARTFELT THANKS TO OUR SPONSORS

Presenting Sponsor



Corporate Benefactors



Benefactors

Michelle & Ryan Brush | Katharyn Alvord Gerlich
Gary Molyneaux | Rachel Ruggeri & Mark McConnell

Artist Award Sponsor



Featured Gallery Sponsor



Goblet Grab Sponsor

Nancy & Roger MacPherson

Artist Table Sponsors

Cheryl & Ron Berenson | Fletch Waller & Ann Janes-Waller
Richard & Barbara Wortley



SPECIAL THANKS

Supporters

AIA Seattle
 Amy Dedoyard
 Art Exhibiton Services
 Artech Fine Art Services
 Artist Trust
 Artists of Color Expo & Symposium
 Bainbridge Artisan Resource Network
 Bainbridge Island Museum of Art
 Broadcast Coffee
 Bullseye Glass
 Central Welding Supply
 Cynthia Hibbard
 Georgetown Brewing Company
 Glass Art Society
 Olympic Color Rods
 Pilchuck Glass School
 Ste. Michelle Wine Estates
 Tito's Handmade Vodka
 The Fishbowl
 Uline
 Vitreluxe

Table Captains

Lee Campbell
 Sandra & Kent Carlson
 Becky Gelder
 Katharyn Alvord Gerlich
 Julie Hamm
 Dian Hartono
 Kamla Kakaria
 Roger & Nancy MacPherson
 Jo Mikesell
 Tiffany Moss
 Samantha & Dirk Muse
 Nintendo of America
 Sarah Shaikh
 Ann & Ron Suter
 Carla Vail
 Kim Van Someren
 Richard & Barbara Wortley

Sponsor Gift Artist

Lynn Read / Vitreluxe

Experience Package Contributors

Alaska Airlines
 Birch Road Clubhouse
 Roger & Nancy MacPherson
 Pratt Board of Trustees
 John & Joyce Price
 Seattle Spoon Club
 Charles Spitzack
 Yu-Ya Su

Special Thanks

Matt Abadi
 Meera Bhardwaj
 Aaron Bourget
 Alton Bucheimer
 Granite Calimpong
 Jason Christian
 José Carlos Diaz
 Esther Ervin
 Jeanne Marie Ferraro
 Henry Jackson-Spieker
 Steve Jensen
 Elisheba Johnson
 Rachael Lagne
 Michael B. Maine
 Alex Martin
 Jason McDonald
 Sean O'Neill
 Pohlman Knowles Studio
 Lynn Read
 Walt Riehl
 Dan D Shafer
 Zeke Spier
 Andrea Stuart-Lehalle

Catalog Design: Dan D Shafer, Dandy Co.

Catering: Tuxedos and Tennis Shoes

Event Photography: Michael B. Maine

Event Production: Synchronicity Events, LLC

Videography: Aaron Bourget

Paragon

KilnSpace. GLOW for it!

warm kilns = warm hearts

WHERE CREATIVE DREAMS COME TRUE

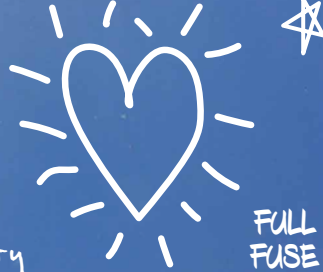
BULLSEYE GLASS

supportive spaces

share ideas

make time for glass

build community



FULL FUSE AHEAD

Learn something new every day!

WARNING
DO NOT TOUCH THE GLASS
TEMPERATURES EXCEED 1000°F
DO NOT RE-OPEN DOORS UNTIL 15 MINUTES FROM ANY WALL OR
PIPE ONLY IN WELL VENTILATED COVERED AND PROTECTED AREA
DO NOT USE BULLSEYE GLASS FOR FOOD OR DRINK CONTACT WITH
GLASS SURFACES ARE NOT TO BE USED FOR FOOD CONTACT
USE APPROPRIATE CONDUCTORS SUITABLE FOR 400°C
DO NOT USE FOR CONTACT WITH FLAMMABLE LIQUIDS OR GASES
DO NOT INSTALL IN A ROOM OF 15 SQUARE FEET SURFACE IN
A ROOM OF 1000 CUBIC FEET

Introducing KilnSpace

A free online hub for glass kiln rentals



kilnspace.bullseyeglass.com



Silent Auction





1001 Jan Tervonen

The Portal 2 | \$650

watermedia collage | 28" x 22" | 2022

Jan Tervonen is an abstract watermedia artist raised in the Upper Peninsula of Michigan, now residing in Seattle. She grew up in a Finnish-American family learning the values of simplicity, organization, and a good pun. Jan's minimalistic style is reminiscent of mid-century modern and Japanese art.



1002 Yulia Chubotin

Autumn Red | \$280

watercolor on paper | 6" x 9" | 2023

Pratt has been part of Yulia Chubotin's life ever since she came to Seattle in 1993 from Kyiv, Ukraine, where she was born, raised, and received her formal art education. In addition to Pratt's watercolor workshops, Yulia teaches at Seattle Colleges and privately.



1003 Kamla Kakaria

Weeping Lotus | \$350

collage | 12" x 12" x 2" | 2023

Kamla Kakaria is the 2D Studio Manager at Pratt, Board President of Seattle Print Arts, and board member for Southern Graphics Council International. She received an MFA in Printmaking from the University of Washington. Her work has been exhibited in the 4Culture Gallery, Seattle's Office of Arts and Culture Gallery, and The Exploded View.



1004 Andre Pace

Untitled No. 17 | \$400

oils, pastels, crayon, acrylic/pen | 10" x 8" | 2023

Whether through bold strokes or intricate details, Andre Pace's art invites viewers to engage with layered narrative and explore the intersection of identity and society. His artistic exploration delves into deconstructing the American Dream, fairy tales, and culture.



1005 Angie Dixon
Strawberry Fields | \$750

sumi ink on rice paper | 11" x 33.5" x .5" | 2019

Angie Dixon earned a BFA in Fine Art and a BA in Art History from UW and studied at Zhejiang Academy of Fine Arts, Hangzhou, China. Angie's artwork explores traditional and contemporary use of Asian brush and ink painting and has been exhibited in galleries and museums in the US, Japan, and China.



1006 Amy Erickson
Miss Castle Supreme | \$1350

acrylic on canvas | 24" x 24" | 2023

Amy Erickson creates highly prismatic drawings, paintings, and collages from observation and imagination. Her imagery includes portraits of close friends, personal effects, and private spaces that offer an intimate glimpse into a reality which is sharp-edged and symbolically curated.

SILENT AUCTION ONE



1007 Kerstin Graudins
Tree of Life | \$600

3 color serigraph | 30" X 24" | 2023

Kerstin Graudins has taught a wide range of printmaking classes at Pratt since 2006. She loves taking classes such as lost wax and bronze casting. If she won the lottery, she would be at Pratt all the time making cool stuff. She thrives on making things across a diverse range of techniques.



1008 Raili Jänese
Sunbathing I | \$800

acrylic on wood panel | 24" x 18" x 1.5" | 2022

Raili Jänese, originally from Estonia, is a self-taught artist who creates character-based work that combines simplified repetitive postures and bold palettes on wood, paper, and canvas. In most of her work, she is inspired by the behavior of living creatures, both animals and humans.



1009 Marian Wachter
Yellow Lady Slipper | \$350

mixed media print | 14" x 14" | 2023

Marian Wachter is a printmaker living in Seattle. She works in various print media, including woodblock, collagraph, drypoint, and monoprint. Marian's prints reflect her love of the natural world and concern for social issues.



1010 Larine Chung
Keep Smiling | \$350

oil on canvas | 9" x 9" x 2" | 2021

Larine Chung is immensely curious, quietly passionate, and cautiously optimistic. Her life goal is to keep a childlike sense of wonder till the end. Larine expresses her non-hierarchical world view by creating everything with the same level of care and love regardless of subject matter.



1011 Cait Willis
The Weathered Wall | \$700

sumi ink, gilt, acrylic on wood panel |
16" x 20" x 1" | 2023

Cait Willis seeks the human connection in our digitally connected world – the dream in the ghosts of our machines. Cait works in gilt, sumi ink, paint, and markers, as well as fused kiln glass vessels. Cait grew up in Seattle, Sydney, and Prague.



1012 Mary Quinn
Fossil Friends | \$350

glass, screenprint | 5" x 7" x 1"; 9" x 12" | 2023

Mary Quinn is a Seattle-based artist pursuing glassblowing and printmaking as unifying mediums to create work that is both whimsical and clever. She focuses on often overlooked and interesting creatures as her subject matter and presents them in a colorful and novel way.



1013 Becky Birinyi
Lifecycle of Confetti | \$600
 collage | 23" x 29" x 1" | 2018

Becky Birinyi is a Seattle mixed media artist. She has a BFA in Printmaking from the University of Washington, where she studied under Glen Alps. Her work is included in several private collections in the US and Japan. Seattle Public Utilities purchased a collage, which is included in its Portable Works Collection.



1014 Shirley Sing
Untitled I | \$200
 mixed media | 24" x 20" | 2005

Shirley Sing is associated with the post-Mudd Club group while informally studying painting in New York City from 1989–2002. She studied at Pratt Fine Arts Center and drew from the figure at Trapeze model sessions.



1015 Linda Pawson
Copper Sunrise | \$525
 mixed media | 19" x 23" 6.5"

Linda Pawson is intrigued by texture and is currently working with unique, distinctive, handmade and hand-printed paper from around the globe that combines fibers, color, and textures for rich, varied sheets. Her one-of-a-kind work uses her proprietary resin process and art paper to create wearable art and wall sculptures, both residential and commercial.



1016 Robin Arnitz
The Band | \$800
 acrylic and ink on paper | 31.5" x 45" | 2016

Robin Arnitz's work deals with themes of power struggles and gender through painting. She exhibits her work nationally and at Shift Gallery in Seattle. Her work has been featured in publications including *New American Paintings*. Arnitz earned her MFA in painting from Cranbrook Academy of Art.

SILENT AUCTION ONE



1017 Leslie Nan Moon

Discovery Park | \$249

jigsaw linocut | 12" x 16" x 1" | 2023

After graduating in 1994 from the University of Arts in Philadelphia, Leslie Nan Moon was drawn to the unmatched beauty of the Pacific Northwest. After being a full-time caregiver to her autistic adult son, now living in a care facility, she is using her newfound freedom to increase her art-making and teaching.



1018 Miles Schlagel

Doe Bay Orcas Island | \$400

gauche and colored pencil on watercolor | 12" x 9" | 2024

Miles Schlagel is a multimedia artist and arts administrator working mainly in painting, printmaking, bookmaking, and jewelry. Miles holds a BFA in Visual Arts from Boise State University and an MFA in Arts Leadership from Seattle University. Miles is Pratt's Jewelry Metals & Stone Studio Manager.



1019 Irene Nelson

Crowd Scribble II | \$300

ink on cold press paper | 9" x 12" | 2024

Irene Stivers Nelson is an emerging artist living and working in Seattle. Her current works in ink and ceramics explore a dreamlike and infinite Antarctic landscape.



1020 Charles Spitzack

Kings of Pioneer Square | \$800

woodcut | 12" x 9" | 2024

Charles Spitzack is a visual artist, educator, and carpenter working in the Pacific Northwest. Committed to communal aspirations, equality, labor rights, environmentalism, and leveling the playing field, Charles has found woodblock printmaking to be an excellent way to express his thoughts and feelings.



1021 Diane Davis
The Windy Day | \$250
 intaglio | 9" x 12" | 2022

Diane Davis is a Seattle printmaker focusing on etching, who began printing in the 1970s. Beginning with forms from nature, she uses line, texture, and color to add complexity and mystery to her images. She continues to learn new techniques and expand her practice in the print studio at Pratt.



1022 Pat Conlon
King Triton Bubbles | \$900
 acrylic, krink pen on canvas |
 26.5" x 36" x 3" | 2024

Pat Conlon lives in Los Angeles and uses the town as inspiration for his work. He repurposes movie promotional material as canvas and creates a painted collage blending the two. The works become unique, stream of conscious pieces.

SILENT AUCTION ONE



1023 Brooke Borcharding
Gallery Row | \$1650
 acrylic | 24" x 30" x 1.5" | 2023

Brooke Borcharding is an acrylic painter who focuses on the color and vibrancy of our local Pacific Northwest landscapes and cityscapes. Her bold and distinctive marks present a fresh contemporary approach to a traditional art form of observational painting. She is a full-time award winning artist working in Seattle.



1024 Vicki Platts-Brown
Deep Sea Diversity | \$500
 intaglio collage | 25" x 30" | 2023

Vicki Platts-Brown began her creative pursuit upon retirement. She began taking classes in Printmaking at Pratt and has continued in that pursuit. Currently she works in Intaglio, but has begun creating collages with images from her prints.



1025 Suneeva Saldanha

On A Long Walk | \$300

acrylic on paper | 15" x 19" x 0.75" | 2024

Suneeva Saldanha is a visual artist based in Seattle. Immersed in the creative process, she explores a variety of mediums to express her artistic vision. Her work reflects a dynamic journey through the realms of imagination and emotion.



1026 Lynn Rosskamp

Hut | \$225

etching | 20" x 10" | 2022

Lynn Rosskamp is a printmaker working primarily in the medium of etching, often with chine collé. As the daughter of a veterinarian and a master gardener, she unsurprisingly makes mainly portraits of animals and plants with an emphasis on their emotions and interior lives.



1027 Annah Kim Nelson-Feeney

**Brave New Bubble (Edition 1 of 3)
| \$1120**

giclée print | 32.25" x 44.25" x 1" | 2020

Annah Kim Nelson-Feeney is a fine art and street photographer. Annah is involved more broadly in the Seattle arts community as the President of the Board of Directors for local nonprofit Living Artists Collective. She uses photography to portray the breadth and depth of the human condition.



1028 Mallory Donahue

Vase | \$150

glass | 8" x 5" x 5" | 2024

Mallory Donahue is a Seattle-based artist, who works in multiple mediums including painting and glass. Although Mallory has spent many years painting and discovering her own style, she has focused on glassblowing for the last six years. She has enjoyed learning and perfecting new techniques.



1029 Sue Kim

Blue Sporgia | \$265

borosilicate glass and silver | 7" x 7" x 4" | 2024

Sue Kim is a glass artist based in Burien, WA. She and her partner built their own flameworking studio, with Pratt's hot shop being their "third place." Like her many houseplants, Sue wilts in the absence of light. She loves combining horticulture and natural forms with glass and sunlight.



1030 Robin Oakes

Last One In Is a Rotten Egg | \$950

fused and slumped glass, wood, lampworke | 6" x 12" x 12" | 2024

Robin Oakes is a local artist who has been working with glass for many years. She has worked in a variety of glass mediums, but is concentrating predominantly on fused glass at this time. She has been a glass instructor at Pratt for 20 years. She loves teaching people about the beauty of glass.

SILENT AUCTION ONE



1031 Eriko Kobayashi

Alex's Pizza | \$400

glass | 4" x 5" x .5" | 2024

Eriko Kobayashi, born in Tokyo, Japan, fell in love with the color and texture of glass in 2014. This fascination led her to study at Toyama City Institute of Glass Art in Japan (2016), and later pursue her MFA in Glass at Southern Illinois University (2022). Kobayashi recently relocated to Seattle.

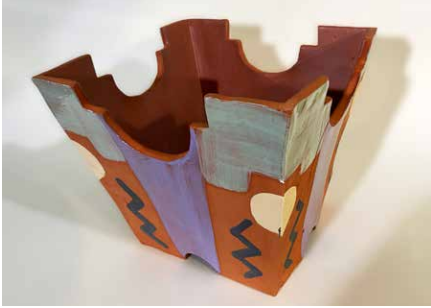


1032 Sterling Collins

Bowl | \$150

bigleaf maple | 2.25" x 7.75" | 2023

Sterling Collins is a designer and craftsperson based in Portland, OR. In 2013, Sterling founded his practice, Hew, which creates furniture and small wares. This work concentrates on the objects used in our everyday lives. All work is designed and hand built by Sterling.



1033 Antonio Gonzalez
Large Planter | \$200

earthenware ceramic | 12" x 12" x 12" | 2022

Antonio Gonzalez is a person of Native Texan and Mexican ancestry and an Indigenous Chicano politic from Yanaguana (San Antonio, TX). Born into a colonial experience, he has spent the majority of his life learning to utilize the arts as constructive alternatives to current socio-political paradigms.



1034 John Hogle
Untitled | \$400

fused glass | 7.25" x 14" x 1.25" | 2024

John Hogle, while attending a BAM Biennial, came across an Uzbeki artist exhibiting a piece that melded traditional Turkoman nomadic weavings with fused glass. This discovery triggered a thrilling artistic excitement that he knew would fill his retirement void.



1035 Matthew Abadi
Flora Décor Bottle - Grey Pair | \$480

furnace glass | 10" x 5.5"; 7" x 7" | 2023

Matthew Abadi lives in Portland, OR, where he works as a freelance glassmaker and artist assistant. His creative practice focuses on the territory between functionality and contemporary design while exploring the versatility of his chosen medium using traditional glass working techniques.



1036 Christine Westergaard
Untitled | \$350

terracotta | 9" x 5" x 4" | 2022

Christine Westergaard received her MFA from Claremont Graduate School, working only in painting and printmaking until six years ago when she began her current body of work in ceramics. She has shown regionally in juried and invitational group exhibitions and is represented by Museo Gallery in Langley, WA.



1037 Kim McIntyre
Leather Embossed Planter Pots,
Set of 2 | \$800

leather, waxed thread | 7.75" x 7.75" x 7.75" | 2023

Kim McIntyre is an instructor at Pratt in the wood studio, as well as running her own business: McIntyre Furniture, LLC. She strives to bring out the natural beauty of wood and leather. She aims for high quality craftsmanship with every piece and project.

SILENT AUCTION ONE

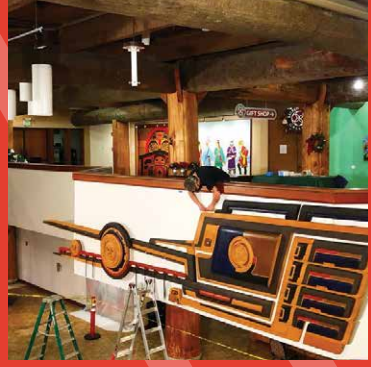


Notes

Exceptional collections deserve exceptional care

Artifact Casework
Fine Art Framing
Mountmaking
Installation & Handling
Rigging
Art Maintenance
Collection Consulting
Custom Crating
Specialized Transport
Secure Climatized Storage
Fine Art Shuttle Service
International Import/Export
Large Projects
Relocation Management

Seattle • Portland
www.artechfas.com
(206) 728-8822



ARTECH

Trusted fine art services. Since 1977.

Silent Auction





2001 Alyssa Miller
Inky Cap Pendant Lamp | \$500

lampworked glass, bamboo | 10" x 6" x 6"
+ 8 foot cord | 2023

Alyssa Miller makes whimsical, nature-inspired glass art from her home studio in Bremerton, WA. She has been working with glass for over 23 years, with a primary focus on borosilicate lampwork. She enjoys making mushrooms, snails, and slugs, then putting them on items for your home and garden.



2002 Lauren Bayer Echevarria
Shine Bright #2 | \$550

fused glass | 15" x 10" x 5" | 2023

A Pacific Northwest native, Lauren Bayer Echevarria primarily works in glass and mixed media. Her practice involves a strong mental health focus, often highlighting her own struggles. Her artwork has been shown at The Fishbowl, No Bad Days, Side Rail Collective, and Slide galleries in Seattle, WA.



2003 Genie Rognier
Ebb & Flow | \$2100

encaustic | 30" x 30" | 2009

Genie Rognier, from Hilo, Hawaii, was inspired by her lush surroundings to pursue art. She holds a BA from San Jose State University and has explored various media. She moved to Medina, WA, and focuses on printmaking, jewelry, and recently, encaustics. Her journey reflects a deep connection to nature and diverse artistic exploration.



2004 Stephanie Hargrave
DJAMOR 4 | \$900

stoneware, encaustic, steel wire |
12" x 7" x 5" | 2022

Stephanie Hargrave has been painting and working in clay for 25 years. She has shown her work in Seattle, Minneapolis, San Luis Obispo, Santa Fe, Brooklyn, Manhattan, Truro, and Atlanta. She recently spent three years in Brooklyn, NY working for artist Michael David and developing her sculptural work.



2005 Mary Josephson

Veil of Rosy Colors | \$3200

oil on wood | 25" x 21" | 2015

Mary Josephson grew up in a military family, moving frequently. She learned to make friends quickly and read people deeply. Raised in the desert southwest during the peak of Westerns, she discovered life's hidden layers early on, seeing beyond initial appearances—a metaphor for her life.

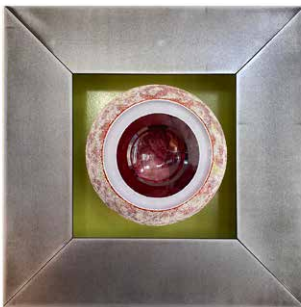


2006 Ariana Heinzman

Flag No. 2 | \$2000

1 of 1 archival print | 26" x 26" | 2022

Ariana Heinzman's work represents the dueling desires of succumbing to nature and controlling it. She creates functional objects, sculpture, and wall works that blend floral imagery, utilitarian vessels, and the body. Heinzman received her BFA from Rhode Island School of Design in 2013 and currently lives on Vashon Island.



2007 Jenny Pohlman & Sabrina Knowles

A Coupling of Benches, Geode series | \$3500

image, glass, steel | 11" x 11" x 4.5" | 2023

Jenny Pohlman and Sabrina Knowles have collaborated for over 30 years, creating narrative sculptures integrating image, glass, and steel.

Proceeds from this item fund the Pohlman Knowles Teen Scholarship at Pratt.

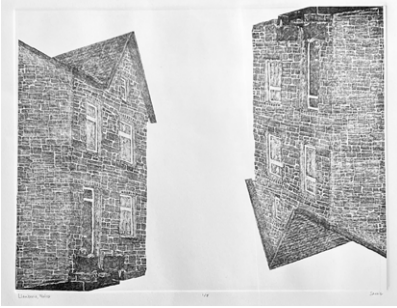


2008 Kathleen Hargrave

Bio Form | \$380

mokuhanga water-based print | 26" x 20" | 2024

Kathleen Hargrave has a degree in Art from the University of Oregon. She has studied at the University of Washington and Pilchuck Glass School, and she's currently a Teaching Assistant in multiple printmaking classes. Her focus has been on personal narrative that explores the transience of our time on earth.



2009 Anna Savoie
Llanberis, Wales | \$250
etching | 11" x 13.75" | 2023

Anna Savoie is a math teacher, printmaker, and traveler. Her travels guide and influence her work, but in ways that take liberties with time, place, and space. Or, as Anna likes to say, "places I love, but I mess with it".



2011 Virginia Hungate-Hawk
Nearly Pertaining To | \$1000

two plate aquatint and line etching |
22" x 15" | 2022

Born and raised in Seattle, Virginia Hungate-Hawk earned her Printmaking MFA from University of Notre Dame and BA in Studio Art and Geography from Macalester College. Her prints have been exhibited nationally and internationally and are in several private and public collections.



2010 Marc Mullin
**Steel Painting - Study #6 -
In Bloom | \$2000**

mixed media on steel | 24" x 15" | 2014

Marc Mullin has extensive experience working with metal and glass as a medium. Marc has taught many metal working classes and has been involved with Pratt since 2000. He is currently working in a 2D capacity using metal and mixed media. As a teaching artist, he has a strong interest in teaching fellow veterans.



2012 Brandon Bowman
Tank Man | \$1500

oil on canvas | 24" x 36" x 1.5" | 2009

Brandon Bowman works in many mediums, primarily focused on metals, and teaching metals: jewelry, foundry, blacksmithing, and welding. She is a private artist — unplugged, no cell, low internet except YouTube for teaching purposes. Work produced in her studio is always intimate and focused on the viewer.



2013 Evy Olsen Halvorsen
Floating Objects Rotating
Towards a Space | \$2100

oil on canvas | 36" x 30" x 1" | 2023

Evy Olsen Halvorsen (aka Holstein) was born in Norway and currently lives in Kingston, WA. After raising her daughters and owning a couple of businesses, she continued her education at Cornish College of the Arts, receiving her Bachelor of Fine Arts *cum laude* in Painting and Printmaking.



2014 Dara Frances Solliday
Viaduct | \$250

etching with chine colle | 14" x 11" | 2023

Dara Frances Solliday's encaustic painting and installation work has been exhibited throughout the US, including the Museum of Northwest Art, Bellevue Arts Museum, Bainbridge Island Museum of Art, and in Seattle at SAM Gallery. She is a teaching artist, staff member, and community member at Pratt.



2015 Lisa Hasegawa
Port Print 1 | \$450

letterpress, collage | 16.5" x 13" | 2024

Lisa Hasegawa is a proud print nerd who enjoys combining various media in her work, primarily experimental letterpress printing, along with sewing, typewriter, and collage. Lisa has been teaching Letterpress at Pratt since 2005.

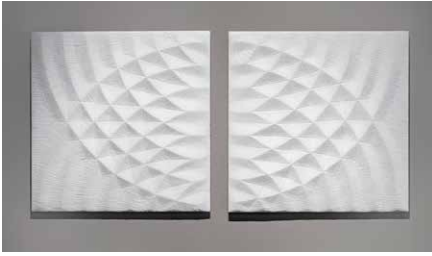


2016 Seth Sexton
Anjali Mudra | \$1400

pen and ink on Strathmore | 11" x 8.5" | 2021

Seth Sexton received his MFA from School of Art Institute of Chicago in 2021. His work has shown at Mana Contemporary and Site Galleries in Chicago, Velocity Dance Center, On the Boards, Soil Gallery, Bumbershoot, Kirkland Arts Center, Auburn City Hall, and others. He is included in the Sea-Tac International Airport Art Collections.

SILENT AUCTION TWO



2017 Carmen Vetter
Concentric | \$6000

kilnformed glass | 21" x 42" | 2012

Carmen Vetter is a talented studio glass artist who has been working with kiln-formed glass since 1999. She creates fused glass wall panels by layering various textures of glass frit and powder in multiple firings. Her work features an interplay of light, color, luster, and texture, combining technical finesse with spontaneity.



2019 Mary Molyneaux
Duet | \$950

mixed media, paper, ink, paint | 18" x 24"

Mary Molyneaux has been a practicing artist for over 30 years working in a variety of media including 2- and 3-D forms. Molyneaux grew up in Missouri and received her BA at Central Missouri University. Further study was completed at the University of Tennessee, Corcoran School of Art, Oregon School of Arts and Crafts, and Pratt Fine Arts Center.



2018 Ruby Lindner
Little Fish Yellow Tail | \$1800

oil, charcoal, and marker on canvas | 30" x 40" x 1.5" | 2023

Ruby Lindner grew up in Aspen, spent her college years and twenties in Paris and Berlin, and moved to Seattle in 1989. Her paintings are punctuated with bold color, rhythm, and humor. She exhibits her work at Ryan James Fine Arts in Kirkland and Women Painters of Washington in Seattle.



2020 Buster Simpson
Northwest Lure | \$800

aircraft grade aluminum, post-consumer plastic, glass, paint, optical foil, monofilament, swivels, cast iron and sneaker | 32" x 10.5" x 1" | 2008

Active since the late 1960s, Buster Simpson has contributed to infrastructure projects, museum installations, and community interventions. Renowned for his "poetic utility"; his work combines humor, social action, and sustainability.



2021 Tommy Gregory
Loading Cross | \$6000

animated neon on patinated mild steel |
 42" x 36" x 3" | 2016

Artist and curator Tommy Gregory holds a BFA from University of Houston and an MFA from UT San Antonio. A former Public Art Specialist in San Antonio, then Houston Airports Program Director, he is currently Public Art Senior Project Manager at the Port of Seattle.



2022 Marita Dingus
Red Princess | \$1200

mixed media | 13" x 37" x 5.5" | 2022

Marita Dingus received a BFA at Temple University's Tyler School of Art and an MFA at San Jose State University. She has received the Irving and Yvonne Twining Humber Award, the Morrie and Joan Alhadeff PONCHO Artist of the Year Award, a John S. Guggenheim Fellowship, and an Artist Trust Fellowship.



2023 Jessie Blackmer
Solace | \$500

glass, dryer lint | 3" x 3" x 1" | 2011

Jessie Blackmer has both a BFA and MFA in Glass and has been active in the international glass art community for the past 25 years. As an exhibiting artist, teaching artist, community organizer, and studio manager, she has developed a rich material-based and community-centered art practice.



2024 Devin Burgess
Untitled | \$1500

glass | 20" x 10" x 10" | 2022

Devin Burgess is a glassblower in Greensboro, Vermont. His handblown glass forms portray a graceful elegance with an acute attention to detail.

SILENT AUCTION TWO



2025 Elizabeth Weber
Rusted Relic | \$300

elm wood, metallic paints, oxidizer | 4.5" x 4.5" x 6.5" | 2024

Elizabeth Weber is a woodturning instructor who serves as club president for the Seattle Woodturners and helps run the the Seattle Spoon Club. She was awarded the American Association of Woodturners' 2023 Professional Outreach Program's Artist Showcase as an emerging artist.



2026 Evgeniya Plotnikova
FOLD 41 | \$850

porcelain, yellow gold luster | 10" x 5" | 2022

EVC.WORKS is a female-run creative practice that works across media with a special focus on porcelain. Artist Evgeniya Plotnikova makes one-of-a-kind sculptural vases from experimenting with various hand-building techniques and color. Studio is based in Seattle and exhibits internationally.



2027 Reed Peck-Kriss
Tripod Side Table | \$2000

white oak, forged steel | 33" x 28" x 14" | 2024

Reed Peck-Kriss is an artist blacksmith from Oakland, CA. He has spent the last several years traveling the country, working for architectural and sculptural blacksmiths. His work has been featured in homes, collections, and galleries across the country. He is currently the Sculpture Studio Manager at Pratt.



2028 Mike Thurlow
Guitar | \$1200

70% repurposed wood | 40" x 13.5" | 2024

A third-generation woodworker, Mike Thurlow considers himself a wood enthusiast. His grandfather did marquetry, his father made cabinets, and he has specialized in stringed musical instruments for the past 16 years. For five years, his students have benefited from his artistry and love of wood.



2029 Alton Bucheimer
Burst | \$1800

blown and engraved glass |
 10" x 6.5" x 6.5" | 2024



Alton Bucheimer is a trans glass artist born and raised in a small farm town in Maryland. He started blowing glass at 16 years old. Alton went on to receive his BFA in 2014 from the Massachusetts College of Art and Design. He relocated to Seattle in 2014.



2030 Elizabeth Weber
Blue Blaze | \$500

wood, milk paint, acrylics |
 3.5" x 7.5" x 7.75" | 2022

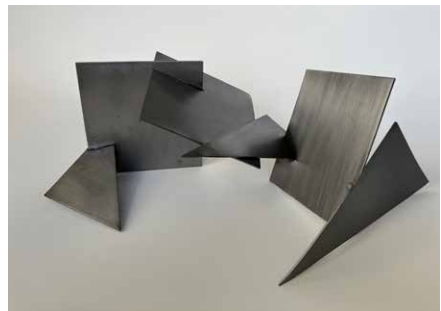
Elizabeth Weber is a woodturning instructor who serves as club president for the Seattle Woodturners, and helps run the the Seattle Spoon Club. She was awarded the American Association of Woodturners' 2023 Professional Outreach Program's Artist Showcase as an emerging artist.



2031 Matthew Stern
Sunset Tides Orb | \$1050

blown glass | 9" x 9" x 9" | 2023

Matthew Stern was born in Virginia, and early on found interest in working with ceramics. His affinity for ceramics encouraged him to apply to Virginia Commonwealth University and attend their craft program where he found his love for glass blowing.



2032 Gregory Foster
No. 12 Painted Welded Steel | \$500

painted, welded steel | 7" x 12" x 4" | 2022

Gregory Foster has worked in various media for 60 years. He has shown his work in numerous Seattle and Vashon Island galleries. His focus for the past three years is minimalist sculpture in steel, nickel, silver, and bronze. His work is influenced by 15 years working in Seattle's shipyards and boatyards.



2033 Diana Friend
Yew Bowl with Walnut Ties | \$300
wood | 3" x 7.75" | 2018

Diana Friend turns wood into bowls on a small island in the Pacific Northwest. Her mostly found wood is lathe-spun in a solar-powered shop. Her desire is to create works that are useful, interesting, and a pleasure to hold. The work is made solely by Diana, from the first chainsaw cut to the final form.



2035 Mark Rudis
I Hear You Knocking | \$1200
cast bronze | 6" x 5.5" | 2020

Mark Rudis attended Cornish College of the Arts and also attended graduate studies at the University of Washington. Mark currently teaches in the Metal Shop at Pratt Fine Art Center. He has taught at the Bush School, Coyote Central, Seattle Children's Home, and South Seattle College.



2034 Paige St-Pierre
Shibori Rust Dyed Wearable Art | \$500

fiber art | size medium | 2023

Paige St-Pierre is a Seattle-based fiber artist, natural dyer, and educator who creates one-of-a-kind textiles from natural dyes and reclaimed fabrics. Her work invites us to pause and reconsider the potential and inherent beauty hiding within the decaying or discarded objects of our everyday lives.



2036 Joel Olson
Star Trek Broach/Pendant | \$3000
silver, amonite, garnets | .4" x 1.75" x .5" | 2023

Joel Olson began his artistic career in high school using all mediums but specializing in model making for jewelry. After freelancing at Sholdt and studying at Cornish, he traveled the world in creative pursuit. He currently creates one-of-a-kind jewelry for private customers and stores around the Seattle area.



2037 Lisa Geertsen
Salt Bowl and Spoon | \$650

hand forged copper and bronze |
 4" x 1" x 1" | 2023

Lisa Geertsen is an artist blacksmith from Seattle, WA. She received a BEA from WVU in 1997 and an MFA in Blacksmithing & Metalsmithing from SIUC in 2023. She has exhibited and been published nationally and internationally. Lisa was the Metal & Stone Sculpture Studio Manager at Pratt from 2013–2020.



2038 Saffron Glass
Paint | \$700

cast silver and bronze, blown glass |
 5.5" x 3" x 3" | 5.5" x 3" x 3"

As Saffron Glass, collaborating artists Jeanne Marie Ferraro and Lee Campbell investigate incorporating metal work with blown glass. For these pieces, silver and bronze objects are cast first. Then, as the glass is being blown, the metal objects are inserted into the glass.



2039 Anne Randall
Tool of Tools | \$450

sterling silver, garnet | 18" | 2024

Anne Randall is a Pratt Instructor and Jewelry/Metals Studio Assistant. Her focus is art jewelry, enameling, and metalsmithing. She exhibits and teaches in the Puget Sound region where she is also active in several arts groups.



2040 Diana Friend
Garry Oak Cup | \$175

wood | 3" x 4.25" | 2022

Diana Friend turns wood into bowls on a small island in the Pacific Northwest. Her mostly found wood is lathe-spun in a solar-powered shop. Her desire is to create works that are useful, interesting, and a pleasure to hold. The work is made solely by Diana, from the first chainsaw cut to the final form.



2041 Aaron Swanson

Atlas Goblet | \$2200

flameworked borosilicate glass |
9.25" x 4" x 4" | 2022

Seattle-area born and raised, Aaron Swanson started working with glass at 16 years old at Sammamish High School and began flameworking shortly after. Aaron is a resident lampworker at Seattle Glassblowing Studio and boro instructor at Pratt.



2042 Hong Hoang

Clutch These Pearls | \$300

resin, glass and plastic pearls, silver |
20" | 2024

Hong Hoang has been a donating artist since 2013. She loves exploring sometimes unconventional materials to create a statement piece. In her free time, she enjoys painting with watercolors and acrylics, cooking, running, and singing in her car, among many other creative endeavors.



2043 Kulla Jatani

Peacock Dream | \$200

Czech beads, nylon thread, 18k plated post | 3.15" x .07" | 2024

Kulla Jatani is a jeweler and owner of Kulla Jewelry. She was born in Nairobi, Kenya and grew up in Seattle, WA. She taught herself jewelry making by reading books, taking classes, and constantly practicing to develop her skills. Kulla attended Revere Academy of Jewelry Arts in San Francisco.



2044 Jackie Loven

Old Fashioned Cocktail Duck | \$150

glass | 2" x 1.5" x 1.5" | 2024

Jackie Loven, a Seattle-based glass artist, crafts charming glass ducks reflecting life's joyous experiences. Inspired by friends, family, their hobbies, and her environment, her figurines encapsulate a universe where every duck tells a story of appreciation and delight.



2045 Maija Brianne
Bubbles of Joy - Ring | \$175
 brass | Size 7 | 2023

Maija Brianne is a maker and metalsmith living and working on Vashon Island. Her jewelry, created in sterling, brass, resin, and enamel, explores organic shapes, texture, color, and implied movement.



2046 Catherine Grisez
Leaf in Construct Necklace & Lone Leaf Earrings | \$330
 sterling silver | 18"

For Catherine Grisez, daughter of a 4th generation home builder, inventing and creating comes naturally. With a BFA from Rhode Island School of Design, multiple awards and publications, and a 20+ year of solo and group exhibitions, she is proud to have her work in private collections nationwide.



2047 Kait Rhoads
Wisteria | \$200
 glass, sterling silver, pink opal | 2.5" x .75" | 2021

Kait Rhoads grew up aboard a boat in the Bahamas and US Virgin Islands, where the liquid light of the water captured her imagination. Her jewelry is inspired by the complex growth systems and the beautiful tessellating structures found in nature.



2048 Esther Ervin
Necklace 22 | \$225
 glass, stones | 22" long | 2019

Esther Ervin is an interdisciplinary visual artist with a degree in Biology from UC Irvine, credits from the American University of Beirut, and an MFA in Fine Art/Illustration from CSU Long Beach. Her art and jewelry have been shown in California, Oregon, Washington, Lithuania, Poland, and China.

SILENT AUCTION TWO



2049 Marina Marioni
Wing Earrings | \$300

fine silver for pierced ears | Aprox .875" | 2020

Self-taught and unbound by material, Marina Marioni has a distinctive style marked by an affinity for visual puns and the tattoo arts. Marina's work has been featured at the Tacoma Art Museum, in exhibitions across the US, and on PBS's *Craft in America*. She is represented by Facère Jewelry Art Gallery.



2050 Sabina Boehm
Glass Chain | \$350

borosilicate glass and silver | 22" | 2024

Sabina Boehm grew up in a non-typical artistic household, filled with crafts, siblings, and a lifestyle which encouraged her art. She learned to blow glass in 1994. Sabina likes for art to touch her life in as many ways as possible. You can find her work published in various magazines and on the web.



2051 Trudee Hill
Fool's (Gold) | \$600

brooch-24k gold vermeil, sterling silver | 0.875" x 3" | 2017

Trudee Hill holds a BFA in Jewelry & Metals from the University of the Arts in Philadelphia. Hill is originally from Seattle, WA and formerly managed Facère Jewelry Art Gallery. She now resides in Cambridge, England. Her work can be found in the permanent collection of the Tacoma Art Museum.



2052 Bonnie Hungate-Hawk
Connections XX | \$700

sterling, shells, beach rock, leather | 5" x 2.25" x 34" | 2022

Bonnie Hungate-Hawk is a maker, working in many mediums but focusing on metalsmithing. The inspiration for her *Connections* series comes from her love of nature and the gifts it bestows on humanity. She is retired from teaching, where she shared her love of creating with her high school students.



2053 David Chatt
Orange Key Necklace | \$900
 glass beads, thread, and found object |
 13 x .5" x 1" | 2024

David Chatt's work is in the Corning Museum of Glass, New York's Museum of Art and Design and the Smithsonian's Renwick Gallery, among others. In 2020 Chatt received the highest award in the Ireland's International Glass Biennale. Chatt is a two-time recipient of the Artist Trust Fellowship Award.



2054 Donna Prunkard
Boho in Silver and Glass | \$380
 glass, sterling silver | 18" | 2024

Donna Prunkard is an instructor at Pratt Fine Arts Center and loves being part of a student's first experience with molten glass. She enjoys exploring the contrasts and similarities between her lifelong career as a research scientist and her more recent passion for glass.



2055 Pratt / Seattle Metals Guild
Collaboration 2024 | \$1000
 necklace | 24" | 2024

For many years, Pratt Fine Arts Center and the Seattle Metals Guild have collaborated on a necklace to be offered at the annual Pratt auction. Our organizations share many talented artists who are part of the rich arts fabric of our Puget Sound Region.



2056 Cheryl Matson
Stardust | \$650
 glass, sterling silver | 24" | 2024

Cheryl Matson has been making glass beads since 2001. She has been the Flame-working Coordinator and a beadmaking instructor at Pratt for 22 years. Cheryl is also the President of Fire & Rain Beads, a chapter of the International Society of Glass Beadmakers. She enjoys working with all types of glass and the energy that surrounds the glass community.

SILENT AUCTION TWO



**2057 Sabina Boehm, Donna Prunkard & Felicia Wartnik
Molecular Spirits | \$800**

glass, copper, stainless steel | 9" x 4" | 2024

Sabina Boehm, Donna Prunkard, and Felicia Wartnik's barware collaboration merges chemistry and mixology. Featuring a flask-inspired carafe with a scientific ethanol formula tag, this set includes frameworked shot glasses and bar tools adorned with lampwork beads, perfect for the science-savvy host.



**2059 Rya Wu
Astrid Lariat and Earring Set | \$220**

borosilicate glass, 14kt gold fill | 24" | 2024

Rya is a Seattle-based artist, curator, and jewelry designer with a focus on spiritual and personal growth through art. Leading The Fishbowl, she merges community and creativity, crafting unique jewelry inspired by healing and cultural stories. Their work in visual arts and fashion underscores their commitment to community and personal expression.



**2058 Nahaan
Green Patina Jitkaat Tinaa | \$220**

copper, leather cord | 2.625" x 2"

Nahaan, of Tlingit, Iñupiaq, Paiute, and Haida heritage, specializes in Northwest Coast art, ceremonial tattooing, and storytelling. He teaches Tlingit and leads the Náakw Dancers in Seattle. Co-founder of "Woosh Kinaadeiyi" poetry slam, his work fosters community empowerment and decolonization. He is based on his ancestral lands.



**2060 Charles Spitzack
Treehouse Design | \$1500**

Get a free treehouse consultation, site visit, and design from Pratt teaching artist and treehouse builder Charles Spitzack. From fully permitted Airbnb style treehouses to canopy walkways and zip lines — let your imagination run wild! *This experience will be scheduled on a mutually agreeable date. Expires April 27, 2025.*



2061 Washington Wine Package

VALUE \$1738

Taste your way along Washington’s West Coast in this high-end wine package, featuring bottles of:

- Cayuse Vineyard Flying Pig 2011
- Glen Fiona Syrah 1999
- K Vinters Syrah 2012
- Cristom Pinot Noir 2017
- Spottswode Cabernet Sauvignon 2016
- Cayuse Syrah 2011
- Horsepower Syrah 2016
- No Girls Grenache 2018
- Opus One Rothchild 1982
- Pirate Treasure Red 2014
- Axios Cabernet Sauvignon 1999
- Leonetti Merlot 2018



2062 Seattle Spoon Club Spoon Carving Art Party | \$1200

Experience a four-hour spoon carving party for up to 10 guests in Pratt’s Wood Studio. Join Seattle Spoon Club members and master the art of spoon carving with all tools and materials provided. A perfect blend of craftsmanship and community awaits in this unique, hands-on experience. *To be scheduled on a mutually agreeable date. Expires April 27, 2025.*



2063 Discover Classic Cocktails 101

VALUE \$750

Enjoy an interactive Cocktail 101 class with 10 of your friends at Birch Road Clubhouse, Seattle’s premier social club, located in the gorgeous carriage house of the historic Stimson Green Mansion in First Hill. Mix, muddle, garnish and sip, of course! *Date to be arranged with Birch Road Clubhouse. Please allow a 1–2 month lead-time for scheduling. Expires Dec. 31, 2024.*



**July 13
6:30 PM
Nick Rossi**

Learn more about
traditional and
contemporary
metallurgy and blade
forging techniques

Master Artist Talks

Free and Open to All!
Details at www.pratt.org

**August 21
6:30 PM**

Doug Pryor

Learn more about
techniques such as
sculpting, chasing,
raising, and repousse





LIVE!

LIVE!

LIVE!

Live Auction





LIVE #1 Board Liquor Cabinet

VALUE \$400

This intoxicating package, donated by Pratt's Board of Trustees, provides a flavor-packed variety of spirits curated to create sensational cocktails. There is bound to be something for everyone in this fantastic selection. Let your inner potion maker get creative.



LIVE #2 Micki Lippe

Mirror, Mirror on the Wall | \$800

sterling silver, found broken mirror | 18" | 2019

This broken glass series started with broken pieces of rearview mirror found on Jackson Street. Too pretty to leave on the ground, these pieces were reimagined into earrings and necklaces. The artwork presented is the largest work from this series.

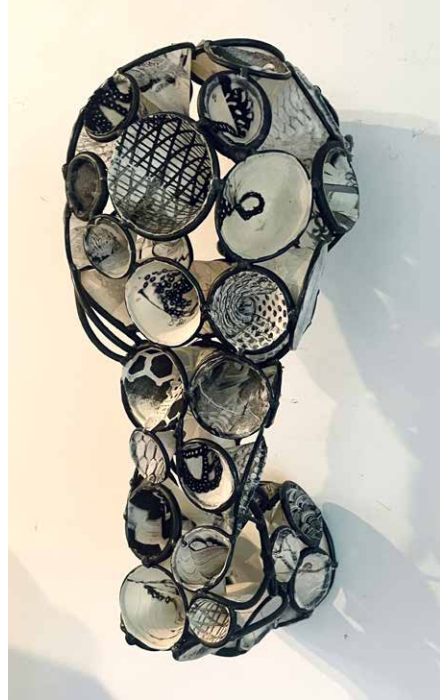
Master jewelry artist and metalsmith Micki Lippe's 50-year creative journey produced one-of-a-kind and production works now held in private collections around the country. Lippe's career includes years of teaching and mentoring younger jewelry artists and founding the Seattle Metals Guild.

LIVE #3 Rickie Wolfe
Bridges and Loops-Rock Formation
 | \$1200

metal and paper | 17" x 8" x 7" | 2022

Combining metal and paper began after encountering large dried paper wasp hives in the attic. The hives assume the shape of their containment. This discovery spoke about adaptability, fragility, strength, and what is hidden. The delicate paper is both exposed and protected in the metal, not unlike the wasp nest.

Rickie Wolfe lives, works, and teaches in Seattle where she has a studio practice in printmaking and sculpture. She received her BFA from Cornish College of the Arts. Rickie is the Coordinator for the Print Department at Pratt Fine Arts Center where she also teaches printmaking.



LIVE #4 Lynn Read
Tri-Tone Hive | \$1800

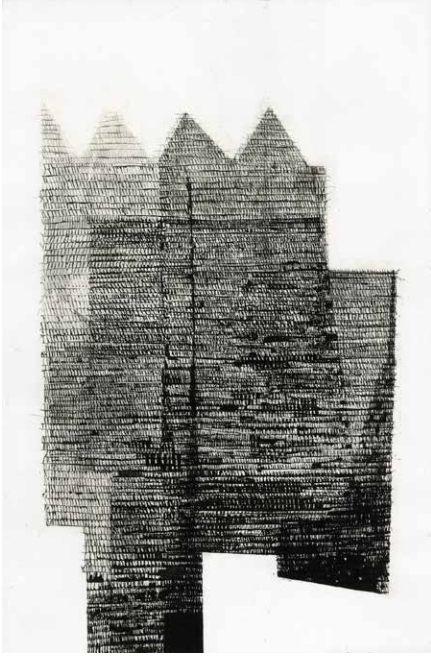
blown glass incalmo | 19" x 8" x 8" | 2023

This is a series of vessels focused on color overlays and transparency. Precisely fusing three separate bubbles together into one reveals elegant colors with refined silhouettes. This is the most demanding product, but the result is a stunning form, impactful color, and a focal point that moves with you.

Lynn Read's early interest in watercolor naturally led him to explore the fascinating world of glass. He was drawn to its unique properties, such as color transparency, optical intrigue, and malleability, which he found to be a perfect medium for his artistic expression.



LIVE AUCTION



LIVE #5 Kim Van Someren
Treader II | \$2800

aquatint, chine collé on gampi |
18" x 12" | 2023

This is a multi-plate etching and aquatint printed on Gampi and Hahnemuhle Copperplate. This series was part of Van Someren's *Mistaken for Measure* series. This hand-drawn plate and resulting print is based off of a suite of hand embroidered works made during the pandemic.

Kim Van Someren, (b. 1979, United States), is a printmaker and teacher rooted in intaglio etching. She has exhibited her prints locally and nationally. Her work is included in numerous private and public collections including Microsoft and the New York Public Library. She is represented locally by J. Rinehart Gallery.



LIVE #6 Jueun Shin
Underwater 2 | \$3500

monotype, collagraph | 27" x 36" | 2021

Jueun Shin is a Seattle-based visual artist. Born in South Korea, she earned her BFA and MFA in Seoul. Since moving to Seattle in 2015, she has been focusing on printmaking. She is a recent recipient of Seattle Print Arts' Larry Sommers Fellowship and a 4Culture Project Grant (2023). She is represented by the Seattle Art Museum Gallery.

LIVE #7 Esther Ervin

Articulated Amalgamation | \$2000

gourds, driftwood, shells, beads | 29" x 14" x 12" | 2007

"Articulated Amalgamation is an imaginary creature that evolved from my interest in marine life."



Esther Ervin is an interdisciplinary visual artist with a degree in Biology from UC Irvine, credits from the American University of Beirut, and an MFA in Fine Art/Illustration from CSU Long Beach. Her art and jewelry have been shown in California, Oregon, Washington, Lithuania, Poland, and China.



LIVE #8 Trenton Quiocho

Bakunawa | \$350

cast glass | 14.5" x 1.5" x 0.5" | 2024



To celebrate the Year of the Dragon, this lovely pendent draws inspiration from the mythical moon eater, Bakunawa, a serpent-like dragon in Filipino mythology that circled the earth and ruled the oceans.

Trenton Quiocho focuses on preserving the rich histories, folktales, and Filipino traditions that have been lost through colonization. The creative process affirms his connection to this history, deepening his understanding of Filipino culture and background, and securing his place in the story.



LIVE AUCTION



LIVE #9 Austin Stern

Belly Balloon | \$1800

blown glass | 8" x 11" x 9" | 2023

Austin Stern has been blowing glass since age 14. After earning a degree in glassblowing at Emporia State University in Kansas, Stern moved to Seattle to develop his own artistic practice within the vibrant glassblowing community in the Pacific Northwest. Stern is inspired by the bright and highly saturated colors found in toys and cartoons, and patterns found in nature and the world of fashion. His current work explores interpersonal relationships and mental health.



LIVE #10 Laura Van Horne

Lime and Turquoise Geodes | \$2200

mixed media on panel in custom frame | 31" x 31" x 2.5" | 2023

This painting is part of the *Geode Series* and is made with a mix of inks and fluid acrylics on panel in a custom float frame. This body of work is a result of years of experimentation with an elixir of mediums and substrates.

Laura Van Horne is a mixed-media artist who works in encaustic, acrylic mixed media, ink, resin, and collage. She was born in Canada and moved to Seattle in 1994. Laura owns Gray Sky Gallery in Pioneer Square. She is also represented by Seattle Art Museum Gallery and Third & Wall Art Group in Seattle.

LIVE #11 Emmanuel Aguilera-Santos

Dulce Nopal | \$2200

glass | 18" x 6" x 6" | 2023

Dulce Nopal was inspired by the native people of Mexico who migrated from the north to the south in search of a better land which was Tenochtitlan (Mexico City). As with most migrants, they are in search of better opportunities. *Dulce Nopal* represents optimism, hope for a sweet life, and the pursuit of joy and happiness.

Emmanuel (Manolo) Aguilera-Santos (b. 1986, Mexico) is an emerging artist, working in hot glass. Originally from Veracruz, Mexico, he now calls Seattle, WA, home. Manolo is currently focused on designing works of art that honor his Native Mexican heritage.



LIVE #12 Steve Jensen

Anderson Island | \$1500

oil on vintage nautical chart | 16" x 20" | 2023

The image of the boat symbolizes a voyage or journey. Perhaps it is the voyage to the other side or a journey to the unknown.

Steve Jensen has been a working artist for over 45 years. He comes from a long tradition of Norwegian fisherman and boat builders, growing up on his father's fishing boat. His work explores the universal image of the boat.



LIVE AUCTION



LIVE #13 Crista Van Slyck Matteson

Spring Hare | \$4000

kiln cast glass, flame worked borosilicate, and mixed media | 14" x 7" x 7" | 2024

Crista Van Slyck Matteson's art reflects the wild spaces of the Pacific Northwest. An accomplished sculptor, she utilizes technical mold-making skills to create exact replicas of found botanical forms. She combines these skills to create magical-realist sculptures and installations.

Crista received a BFA from California College of the Arts; she has studied glass and metal working at Pratt and figure sculpture at Gage. She has received numerous awards, has been featured in *GlassArt* and *Flow* magazines, and will teach at Pilchuck and Pratt in 2024.



LIVE #14 Sabah Al-Dhaher

Phoenix Rising | \$3000

desert onyx on marble base | 14" x 4" x 3" | 2023

Hand carved in desert onyx, this piece is inspired by the natural stone and the myth of the phoenix; a mythical golden bird associated with renewal and regeneration rising from the ashes of its previous life, the phoenix is a symbol of hope, of life, and of better things to come.

Sabah Al-Dhaher was born in Nasriyah, Iraq. At the age of 15, he was accepted to the Institute of Fine Arts in Basra, Iraq, where he lived and received his training in classical art, graduating first in his class in 1989. Sabah teaches stone carving.

LIVE #15 Jason Christian

Fire Dragon | \$2600

glass | 9" x 6" x 4" | 2023

“Growing up on Whidbey Island, I would often see dragons on the side of jets flying overhead. To me that symbolized the drive to keep going — to overcome the hurdles and to keep pushing the boundaries in my craft. That symbolism translates into this piece. Taking extensive time and effort to create, it is my most laborious piece.”

Jason Christian still doesn't know if he chose glassblowing or if it chose him. He just knows that the moment he walked into the studio and saw what was being created, he had to be a part of it. His artwork represents himself as a whole. Throughout his career as a maker and artist, he has been inspired by many facets of life.



LIVE #16 Makana Cole, Finnegan Fant, John O'Neil, Brandon Bowman



Graft [The Legacy of Passing on Knowledge] | \$5000

iron, copper, silver, oak, gemstones | 20" x 20" x 24" | 2024

Graft is a technical achievement of four talented artists pushing metallurgy in order to represent the passing down of knowledge and skill and how that affects our growth in a community. Some things flourish, other things die, and all are part of us. The sculpture *Graft* is resting on a piece of 450-year-old Wye Oak with a certificate of authenticity.



LIVE AUCTION



LIVE #17
Henry Jackson-Spieker
Untitled | \$1000

glass, wood | 6" x 4" x 1.5" | 2024

Henry Jackson-Spieker is a multidisciplinary artist based in Seattle, focusing on sculpture and site-specific installations. His work combines glass, bronze, steel, wood, fiber, and light. His sculptures explore tension, balance, and reflection through the merging of contrasting materials.



LIVE #18 Dante Marioni
Martini and Wine Goblets | \$1200

blown glass | 8.25" x 5" d
7.25" x 3.5" d

Dante Marioni burst onto the international glass scene at 19 with a signature style described as 'the purest of classical glass forms executed by an American glassblower'. At age 23, Marioni had his first sell-out gallery show in Seattle that featured his Whopper vases. For Marioni, making objects is about the art of glassblowing rather than the creation of glass art, the process rather than the result.

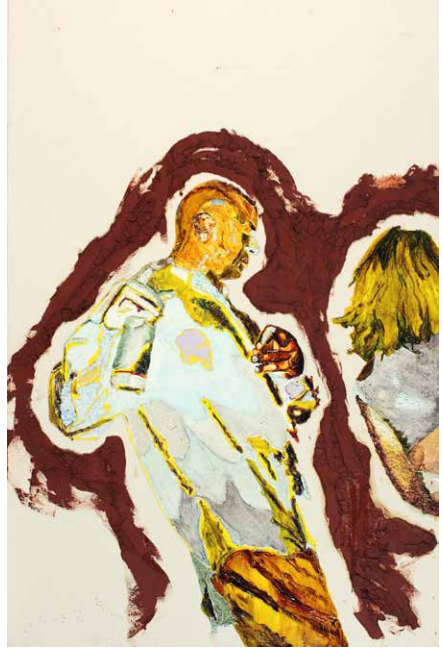
LIVE #19 Mark Miller

Couple Dancing | \$5000

acrylic, encaustic, oil on canvas | 48" x 72" | 2014

Nick had his car parked on Capitol Hill during the day. When he came back he found an exposed roll of film on his drivers seat. Around the film was a lawyer's business card which read: "Associated Counsel for the Accused". Nick kept the film undeveloped for many years before giving it to Mark Miller. Nick was afraid to see what was on it.

Mark Miller graduated with an MFA in 1991 from the University of Iowa. He has had 21 solo shows, including in the Chelsea District, NYC; the Chinatown neighborhood in Los Angeles, CA; Portland, OR; and Seattle, WA.



LIVE #20 Marco & Mattia Salvatore

Vaso Evviva | \$7400

blown and carved glass | 26" x 15" x 8" | 2018

Vaso Evviva is representative of Marco and Mattia's iconic body of work: simple, graceful elliptical shapes; layered colors encased in glass; large murrine; and coldworked patterned surfaces.

The brothers began working alongside their father, Muranese Maestro Davide Salvatore, in the studio Campanol e Salvatore as young boys. They inherited their father's passion for glass and began to work with him full time after attending college.





LIVE #21 Anna Skibska
Do People Cast Shadows? | \$3600
glass, paint, Anna Skibska technique |
36" x 17" x 10" | 2024

Anna Skibska studied in the Department of Painting at the Academy of Art in Wroclaw, Poland. She received her diploma in 1984 and the Lifetime Achievement Honeycomb Award in Poland in 2014. She has presented over 50 solo exhibitions at the National Museum in Wroclaw, Seattle Art Museum, Museo del Vetro in Murano, Museum of Glass in Tacoma, and others. Her signature technique, the Anna Skibska technique, was developed in the early 1990s.



LIVE #22 Ricardo Duque
Wild Fire | \$3400

acrylic-resin | 48" x 48" | 2020

Wild Fire explores the deep intense feeling of fire and the way it can change the narrative of a situation.

By exploring the concept of landscape in a nostalgic way, Ricardo Duque creates intense personal moments created by rules and omissions, acceptance, and refusal, luring the viewer round and round in circles. Deconstruction is the vessel to shift the narrative.

LIVE #23 Jeanne Marie Ferraro
Iron Man and His Friends | \$6000

cast iron (recycled radiator),
 cast glass, stone base |
 18" x 16" x 16"



Jeanne Marie Ferraro was raised in a working-class family in Cleveland, Ohio, and found her artistic passion in childhood while observing the pouring of liquid metal into steel beams with her father. Jeanne's art has been exhibited nationally and internationally, including in Canada and Portugal, and is part of private collections. Jeanne has dedicated forty years to teaching visual art, currently focusing on glassblowing, drawing, and painting at Pratt.



LIVE #24 Ashley Hale
Preening Herron Partners | \$4500

lino block print, watercolor, gold ink |
 40" x 40" x .75" | 2022

Preening Heron Partners is an extra large oil linoleum block print at 36" x 36". Watercolor was added along with gold leaf to enhance and create contrast within the image. The image depicts 2 heron birds preening together while protecting each other in the process. The composition uses emulating rings as concept of energy/ connection to one another.

Ashley Hale is a Snoqualmie-based printmaker and mixed media artist. She works predominantly in linoleum block printmaking, adding watercolor, color pencil, and gold leaf as an enhancement. Her narrative focuses on nature and spiritual energy. Ashley has been creating and teaching art for 13 years.



LIVE AUCTION



**LIVE #25 Five Nights in
Puerto Vallarta, Mexico**
VALUE \$7500

Villa Las Puertas is an elegantly designed 7 bedroom Mexican estate. This 10,500+ square foot property has plenty of space for your group and overlooks the Bay of Banderas while having direct beach access just 150 steps away down a private staircase. Enjoy chef services who will prepare two meals a day for your group, as well as daily maid service and a waiter who will make drinks and serve meals.

This experience will be scheduled on a mutually agreeable date. Christmas, New Year's and January–March excluded. Expires April 27, 2026



LIVE #26 Martin Blank
Gold Ruby Bloom | \$8500
glass | 13" x 10" x 10"

Hot sculpted glass and gold leaf, from the *Bloom* series.

Martin Blank began his professional career in Seattle, working at the center of American studio glass and learning from the driving force behind it, Mr. Dale Chihuly. Martin's work is about carving space. "I'm an intuitive artist. I work on the way forms relate to each other, to cut a line in space that flows, turns, and carries the eye around the piece," he says.

LIVE #27 Jenny Pohlman & Sabrina Knowles

Aurora Daybreak, Homage Series | \$7000

glass, steel | 29" x 8" x 8" | 2024



Works in the *Homage* series are an evolution of the artists' first collaborative piece, inspired by a suite of pastels made by their late friend John Mark Fleming and created specifically for the Pratt auction in 1993. The artists' intent with the figures is to create a feeling of reverence and respect through subtle gesture.

Sabrina Knowles and Jenny Pohlman have collaborated for over 30 years, creating narrative sculptures integrating image, glass, and steel.



LIVE #28 George Scott

Full Circle | \$4500

fused glass, silver | 43" diameter | 2023

The silver content of the glass creates a dichroic effect in the transmission and reflection of light. The reflected light is a celadon crackle, and the transmitted light is a golden amber, depending on the light source.

Born 1947 in Los Angeles, George Scott's misspent youth led him to better things like investigating jewelry and glass art. He maintains a glass studio and shared atelier in the Marina District of Des Moines, Washington, where he works with glass and metal sculpture, as well as architectural and functional art.





**LIVE #29 Six-night Stay at
Alaia Ambergris Caye Belize
VALUE \$3000**

Enjoy a six-night stay at a condo in Alaia, located in San Pedro, Belize. This Garden View Reef House is a two-bedroom suite in Ambergris Caye. With a stunning view of the Caribbean and just a minute walk to the shore, you will have a week in your own piece of paradise. San Pedro is the vibrant heart of Ambergris Caye, Belize's largest island and a hotspot for beach lovers and water sports enthusiasts. Snorkel with nurse sharks and stingrays at the Hol Chan Marine Reserve, dive into the mysterious depths of the Great Blue Hole, or simply relax on the white sand.

This experience will be scheduled on a mutually agreeable date. Blackout dates are December 24 – January 10, one week before/after Easter, July 3 – 10 and November 9 – 16, 2024. Must be booked three months in advance. Expires April 27, 2025.



RAISE THE PADDLE!

See information at right



**LIVE #30 Two Alaska Airlines
Round-Trip Ticket Vouchers
VALUE \$2500**

Treat yourself and one companion to two round-trip ticket vouchers with Alaska Airlines worth \$1,250 each. Enjoy a trip to any of the 115+ destinations across the US, Canada, Mexico, and Costa Rica covered by Alaska Airlines. Seating is coach. Expires April 27, 2025.

RAISE THE PADDLE!

At Pratt, we strive to make art accessible to everyone: access to arts education; access to highly specialized equipment and studio space; access to the transformative experience of making art.

Your Raise the Paddle gifts will directly support our mission, making the creative experience accessible to over 20,000 community members in the coming year.

Raise your paddle to help Pratt meet a special \$100,000 Matching Challenge from the Klorfine Foundation!

GIVING LEVELS

Our Auctioneer will provide an opportunity to give at the levels below. Consider your ability to make a meaningful impact, and then choose one or more levels to total your contribution.

\$25,000

\$1,000

\$10,000

\$500

\$5,000

\$250

\$2,500

\$100

Thank you for your support!





LIVE #31 Chuck Lopez
Amber Half Square | \$3500

blown glass, cane/murrini |
10.5" x 16" x 5" | 2024

Chuck Lopez started working with glass in 1989. With a background in computer science, mathematics, and philosophy, he received a BA in Philosophy from University of Colorado, 1995, and an MFA from Alfred University, 1999. He resides in Seattle, where he continues to make art and explore glass as a material.



**LIVE #32 Preston
Singletary**
Box Drum Design | \$750

serigraph on paper | 18" x 15" | 2006

Box Drum Design is a pencil-signed serigraph, from a limited edition of 100.

Preston Singletary's work has become synonymous with the relationship between Tlingit culture and fine art. His glass sculptures deal with themes of Tlingit mythology and traditional designs, while also using music to shape his contemporary perspective of Native culture and his own Tlingit heritage.



LIVE #33 Leah Wingfield & Steve Clements

Bilo | \$4570

cast glass | 20" x 11" x 6" | 1996

Leah Wingfield has been creating glass and mixed-media figurative sculptures with her spouse, Steve Clements, for over 30 years. They are best known for sculptures that consider the nature of relationships.

Proceeds from this item fund the Webber/Tompkins Scholarship in Glass at Pratt.



LIVE #34 Cappy Thompson & Dick Weiss

Tiger with Thought Bubble at Christmastime | \$1700

underglaze painting on terracotta slab | 23.25" x 8.5" x 2.75" | 2011

This piece is from the *Silk Purse* series. Painted at Pottery Northwest in December of 2011, the artists worked side by side, pouring over books of Indian folk painting and Pennsylvania Dutch frakturs—borrowing freely from such sources and passing terracotta bisque-ware back and forth. Dick’s graffiti fills the thought bubble.

Cappy Thompson and Dick Weiss have been friends and fellow glass artists in Seattle for decades. A shared fascination in folk pottery and indigenous arts enticed them to clay. For 15 years, they have painted on bisque-ware of their own making or that of others. Their goal is a rich mix of culture, clay, and paint.



LIVE AUCTION



LIVE #35 Davide Salvatore

Opera Odiambo | \$15,500

blown and carved glass | 13" x 37" x 5.5"
| 2006

Davide Salvatore is from a family of Venetian glassworkers. In 1987, he and two partners founded the studio Campagnol e Salvatore, where he works as a glass master. Salvatore is also a founding member of Centro Studio Vetro in Murano, a nonprofit association that aims to promote the culture and art of glass.

**This item is not available as a Golden Ticket Winner selection.*



LIVE #36 Larry Calkins

Happiness on Chacala Beach |

\$3000

encaustic painting | 12" x 48"

Larry Calkins grew up in Harlan, OR where his family has lived for five generations. He worked in the photo industry before turning to making art full time. Currently, his work is shown in galleries across the US. Larry and his wife live on Tiger Mountain with a beloved menagerie including mules, chickens, dogs, and cats.

Proceeds from this item fund the Global Arts Practice Scholarship at Pratt.



Notes



MERCER ISLAND

MODERN FARMHOUSE



SOLD

This Modern Farmhouse located on the shore of Mercer Island boasts gorgeous views of the Eastside of Lake Washington. Inspired by various boutique hotels in New York City, the home demanded bold architectural details such as steel barn doors, shiplap paneling and artisan made light fixtures. The strategically placed terraces and decks seamlessly connect the interior spaces with the natural beauty outside



MacPherson
Construction & Design

PROUD SUPPORTERS OF THE PRATT FINE ARTS CENTER



W COLLECTION

AMY DEDOYARD

Realtor, Managing Broker
WINDERMERE YARROW BAY
amydedoyard@gmail.com
www.amydedoyard.com
(206) 715-3043

HUNTS POINT

NORTHWEST CONTEMPORARY



CUSTOM BUILD

This Hunts Point home stands out with its curved roof design, a creative choice that adds architectural interest and volume to the interiors. The materials create a moody symphony with the stone anchoring the foundation, the wood softening the hard steel lines and the stucco giving a warm creamy palette backdrop. The warmth of tones comforts the eye, and the infinity pools give a pop of color as the sun sets.



MacPherson
Construction & Design

www.macphersonconstruction.com

(425) 391-3333

CAN'T SPELL COMMUNITY WITHOUT UNITY



Alaska[®]
AIRLINES



We're proud to support Pratt Fine Arts Center.
#AlaskaCarelines

ESCAPE THE ORDINARY



Bash!

June 7 & 8

Indulge in two nights of tropical inspiration at our exclusive auction event, featuring an array of one-of-a-kind works of art, luxurious travel packages, and so much more.

Details at www.biartmuseum.org

B	I
M	A

 BAINBRIDGE ISLAND
MUSEUM OF ART



B R O A D C A S T
C O F F E E

WWW.BROADCASTCOFFEE.COM

1918 EAST YESLER WAY
SEATTLE, WA 98122

@BROADCASTCOFFEE

CENTRAL WELDING SUPPLY

*Gases, Safety Products, and Welding Supplies
for Industry and Life*



**GASES, APPARATUS,
SUPPLIES & PPE
for Jewelry and
Glass Art!**



27 Locations in Washington, Oregon & Alaska

www.centralwelding.com



Savor Oaxaca's Crafts with GAS

September 25 – October 2, 2024

[Learn more at glassart.org](http://glassart.org)

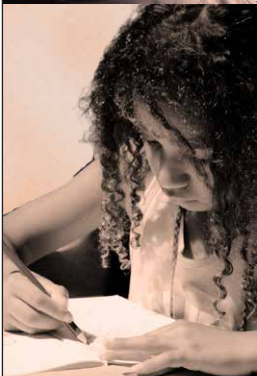


7 MAY 2024

4:00-8:00 PM

PRATT FINE ARTS CENTER YOUTH & TEEN ART SHOW

@ THE FISHBOWL GALLERY
424 2nd Ave West



The Fishbowl





PILCHUCK GLASS SCHOOL

2024 WORKSHOPS

BE IMMERSED. BE INSPIRED. BE TRANSFORMED

Gain new skills, build on foundations, and explore the outermost edges of glass on our serene Pacific Northwest campus.

VISIT PILCHUCK.ORG FOR MORE INFO & TO APPLY!



OLYMPIC COLORS

1050 West Nickerson St. Seattle, Washington, 98119

www.glasscolor.com
Ph: 800-445-7742
sales@glasscolor.com

Where art and glass
come together...

Established in 1989, Olympic Color Rods has become the ultimate destination for all glass color and tool needs. As a leading provider in the industry, we offer a comprehensive range of products and services to cater to glass artists, professionals, and enthusiasts alike. We invite you to visit our store, explore our vast selection, and experience our exceptional customer service.

FURNACE GLASS

We carry all major brands of furnace glass, stored in locations all over United States! Choose from Spruce Pine Batch, PV, Bomma and Oceanside Culletts to keep your furnaces ablaze all year round.

GLASS COLOR

With the largest color library in North America for both blowing and casting glasses, find Reichenbach, Gaffer, Oceanside, Bullseye, Sunspot Studios, CBS Dichroic and many more!

GLASS TOOLS

In addition to our wide range of glass colors, we also provide an extensive collection of tools and equipment designed to meet the unique needs of glass artists, we offer everything required to support your glass crafting process. Find all your favorite brands like Blockhead Tools, Jim Moore Tools, Hegan Tools, Correll Corks and so much more!

Let us be your one-stop shop for all your glass color and tool needs

Olympic Color Rods



Official Color Partners of Glass Away

In addition to our product offerings, we are committed to fostering a vibrant and inclusive glass art community.

Whether you're a professional glass artist, a hobbyist, or someone looking to explore the world of glass art, Olympic Color Rods is your trusted partner

Our team of knowledgeable professionals is always available to guide you in selecting the right tools for your specific project





Seattle Design Festival



SDF 2024: *What if?*

Call for Proposals

Due May 29

Festival

Kicks Off August 17

More info

seadesignfest.org



SHUNPIKE

ACES

ARTISTS OF COLOR EXPO & SYMPOSIUM


AUG 16-17 2024

KEXP AT SEATTLE CENTER

ACES // Artists of Color Expo & Symposium is a BIPOC-led, community-curated program. We are coming together with intentionality to value our work and see one another as resources, while focusing on the challenges and solutions we face as artists of color in the Pacific Northwest.



SHUNPIKE.ORG/ACES




Art Exhibition Services

Art Walls • Pedestals

Rentals • Exhibit Design

Fabrication • Consulting

Claire Johnson
 ArtExhibitionServices.com
 206.999.8084



Artist Trust is here with artists.

Artist Trust supports working artists of all disciplines in Washington State through grant funding and professional development programming.

Learn more at artisttrust.org
 @artisttrust




Image: Sarah Elizabeth Barnett, Fellowship Awards Recipient, 2023



BainbridgeBARN.org



BARN

Creativity, Craft & Community
 10 Studios | Creative Classes

ARTIST INDEX

A

Abadi, Matthew 24
Aguilera-Santos, Emmanuel 51
Al-Dhaheer, Sabah 52
Arnitz, Robin 19

B

Bayer, Lauren 28
Birinyi, Becky 19
Blackmer, Jessie 33
Blank, Martin 58
Boehm, Sabina 40, 42
Borcherding, Brooke 21
Bowman, Brandon 30, 53
Brienne, Maija 39
Bucheimer, Alton 35
Burgess, Devin 33

C

Calkins, Larry 64
Campbell, Lee 37
Chatt, David 41
Christian, Jason 53
Chubotin, Yulia 16
Chung, Larine 18
Clements, Steve 63
Cole, Makana 53
Collins, Sterling 23
Conlon, Pat 21

D

Davis, Diane 21
Dingus, Marita 33
Dixon, Angie 17
Donahue, Mallory 22
Duque, Ricardo 56

E

Erickson, Amy 17
Ervin, Esther 39, 49

F

Fant, Finnegan 53
Ferraro, Jeannne Marie 37, 57
Foster, Gregory 35
Friend, Diana 36, 37

G

Geertsen, Lisa 37
Gonzalez, Antonio 24
Graudins, Kerstin 17
Gregory, Tommy 33
Grisez, Catherine 39

H

Hale, Ashley 57
Halvorsen, Evy Olsen 31
Hargrave, Kathleen 29
Hargrave, Stephanie 28
Hasegawa, Lisa 31
Heinzman, Ariana 29
Hill, Trudee 40
Hoang, Hong 38
Hogle, John 24
Hungate-Hawk, Bonnie 40
Hungate-Hawk, Virginia 30

J

Jackson-Spieker, Henry 54
Jänese, Raili 17
Jatani, Kulla 38
Jensen, Steve 51
Josephson, Mary 29

K

Kakaria, Kamla 16
Kim, Sue 23
Knowles, Sabrina 29, 59
Kobayashi, Eriko 23

L

Lindner, Ruby 32
Lippe, Micki 46

Lopez, Chuck 62
Loven, Jackie 38

M

Marioni, Dante 54
Marioni, Marina 40
Matson, Cheryl 41
Matteson, Crista Van Slyck 52
McIntyre, Kim 25
Miller, Alyssa 28
Miller, Mark 55
Molyneaux, Mary 32
Moon, Leslie Nan 20
Mullin, Marc 30

N

Nahaan 42
Nelson-Feeney, Annah Kim 22
Nelson, Irene 20

O

Oakes, Robin 23
Olson, Joel 36
O'Neil, John 53

P

Pace, Andre 16
Pawson, Linda 19
Peck-Kriss, Reed 34
Platts-Brown, Vicki 21
Plotnikova, Evgeniya 34
Pohlman, Jenny 29, 59
Prunkard, Donna 41, 42

Q

Quinn, Mary 18
Quiocho, Trenton 49

R

Randall, Anne 37
Read, Lynn 47
Rhoads, Kait 39
Rognier, Genie 28
Rosskamp, Lynn 22
Rudis, Mark 36

S

Saffron Glass 37
Saldanha, Suneeva 22
Salvadore, Davide 64
Salvadore, Marco 55
Salvadore, Mattia 55
Savoie, Anna 30
Schlagel, Miles 20
Scott, George 59
Seattle Metals Guild 41
Sexton, Seth 31
Shin, Jueun 48
Simpson, Buster 32
Singletary, Preston 62
Sing, Shirley 19
Skibska, Anna 56
Solliday, Dara Frances 31
Spitzack, Charles 20
Stern, Austin 50
Stern, Matthew 35
St-Pierre, Paige 36
Swanson, Aaron 38

T

Tervonen, Jan 16
Thompson, Cappy 63
Thurlow, Mike 34

V

Van Horne, Laura 50
Van Someren, Kim 48
Vetter, Carmen 32

W

Wachter, Marian 18
Wartnik, Felicia 42
Weber, Elizabeth 34, 35
Weiss, Dick 63
Westergaard, Christine 24
Willis, Cait 18
Wingfield, Leah 63
Wolfe, Rickie 47
Wu, Rya 42

EXPERIENCE INDEX

Silent Auction Two Experiences

- 2060** Charles Spitzack - Treehouse Design 42
- 2061** Washington Wine Package 43
- 2062** Seattle Spoon Club - Spoon Carving Art Party 43
- 2063** Discover Classic Cocktails 101 43

Live Auction Experiences

- Live 1** Board Liquor Cabinet 46
- Live 25** One-week Luxury Stay in Puerto Vallarta 58
- Live 29** Six-night Stay at Alaia Ambergris Caye Belize 60
- Live 30** Two Alaska Airlines Round-Trip Ticket Vouchers 60



Notes



Starting June 24th
for ages 6 and up

Youth & Teen Summer Art Classes and Camps

Enroll Today!

www.pratt.org



Live Music

Food Trucks

Live Artist Demos

Art-Making Activities

Art Vendors
& More

Pratt Open House

Saturday, Sept 7, 2024 5-8 PM

Music Performances From

Jackson Street Jazz Walk
jacksonstreetjazz.org





THANK YOU, ARTISTS!

Pratt Fine Arts Center is truly blessed with a dynamic community of artists who support the organization's mission in myriad ways, year after year. Pratt Aglow features an especially impressive display of art contributed by an incredible and generous group of artists.

Artists, we stand in absolute awe of your creative contributions to the field and are sincerely grateful for your gifts this year. We appreciate you!

Collectors, we encourage you to bid boldly this evening in support of our mission and these artists who have been, and continue to be, so giving. We encourage everyone to extend support for these artists by visiting their studios and galleries and continuing to invest in and enjoy their work throughout the year.

[#PrattAglow2024](#)

